



## V Vane Pump SERIES

---

## Table of Contents

Order Code - Single Pump .....	2
Order Code - Double Pump .....	3
Performance Data - 20V .....	4
Performance Data - 25V .....	5
Performance Data - 35V .....	6
Performance Data - 45V .....	7
Installation Dimension - 20V .....	8
Installation Dimension - 25V .....	9
Installation Dimension - 35V .....	10
Installation Dimension - 45V .....	11
Installation Dimension - 2520V .....	12
Installation Dimension - 3520V .....	13
Installation Dimension - 3525V .....	14
Installation Dimension - 4520V .....	15
Installation Dimension - 4525V .....	16
Installation Dimension - 4535V .....	17
SAE 4-Bolt Flanges .....	18

(F3) - 25V 17 A - 1 C 22 L

-----  
 1            2            3            4            5            6            7            8  
 -----

1    Special Seals

-----  
 Omit - (Standard)  
 F3 - Viton Seals

2    Series No

-----  
 20V            25V            35V  
 45V

3    Pump (GPM)

-----  
 (@1200 RPM, 100 PSI)  
 20V            25V            35V  
 -----

2            10            25  
 5            12            30  
 8            14            32  
 9            17            35  
 11          19            38  
 12          21  
 14

45V

-----  
 42  
 45  
 50  
 60  
 75

4    Port Connection

-----  
 A - SAE 4-Bolt Flange (Standard)

5    Shaft Type

-----  
 1 - Straight Keyed (Standard)  
 151 - Splined  
       (20V Only)  
 11 - Splined  
 86 - Straight Keyed  
       (Heavy Duty Except 20V)

6    Outlet Port Position

-----  
 (View From Cover End of Pump)  
 A - Opposite Inlet  
 B - 90° CCW From Inlet  
 C - Inline With Inlet (Standard)  
 D - 90° CW From Inlet

7    Design Number

-----  
 22 - (Standard)  
 10 - Design Change

8    Rotation

-----  
 (View From Shaft End of Pump)  
 Omit - Right Hand Rotation  
       (Standard)  
 L - Left Hand Rotation



SERIES NO	PUMP (GPM)	MAX SPEED (RPM)			MAX PRESSURE (PSI)			MIN SPEED (RPM)				
		ANTI-WEAR OIL	WATER GLYCOL	WATER-IN-OIL EMULSION	ANTI-WEAR OIL	WATER GLYCOL	WATER-IN-OIL EMULSION	ALL FLUIDS				
20V	2	1800	1500	1200	2000	2000	1000	600				
	5,8,9,11				3000	2300	1000					
	12				2300	2000	1000					
	14				2000	2000	1000					
25V	10,12,14,17,19,21								2500	2300	1000	
35V	25,30,32,35,38								2500	2300	1000	
45V	42,45,50,60								2500	2300	1000	
	75								2000	2000	1000	

(F3) - 2520V 17 A 11 - 1 C C 22 L

1 2 3 4 5 6 7 8 9 10

1 Special Seals

Omit - (Standard)  
F3 - Viton Seals

2 Series No

2520V	3520V	3525V
4520V	4525V	4535V

3 Shaft End Pump (GPM)

(@1200 RPM, 100 PSI)

25**V	35**V	45**V
-------	-------	-------

10	25	42
12	30	45
14	32	50
17	35	60
19	38	75
21		

4 Port Connection

A - SAE 4-Bolt Flange (Standard)

5 Cover End Pump (GPM)

(@1200 RPM, 100 PSI)

**20V	**25V	**35V
-------	-------	-------

2	10	25
5	12	30
8	14	32
9	17	35
11	19	38
12	21	
14		

6 Shaft Type

1 - Straight Keyed (Standard)  
11 - Splined  
86 - Straight Keyed (Heavy Duty)

7 Outlet No 1 Port Position

(View From Cover End of Pump)

A - Opposite Inlet  
B - 90° CCW From Inlet  
C - Inline With Inlet (Standard)  
D - 90° CW From Inlet

8 Outlet No 2 Port Position

(View From Cover End of Pump)  
All Series Except 4535V

A - 135° CCW From Inlet  
B - 45° CCW From Inlet  
C - 45° CW From Inlet (Standard)  
D - 135° CW From Inlet

Series 4535V

A - Opposite Inlet  
B - 90° CCW From Inlet  
C - Inline with Inlet (Standard)  
D - 90° CW From Inlet

9 Design Number

22 - (Standard)  
10 - Design Change

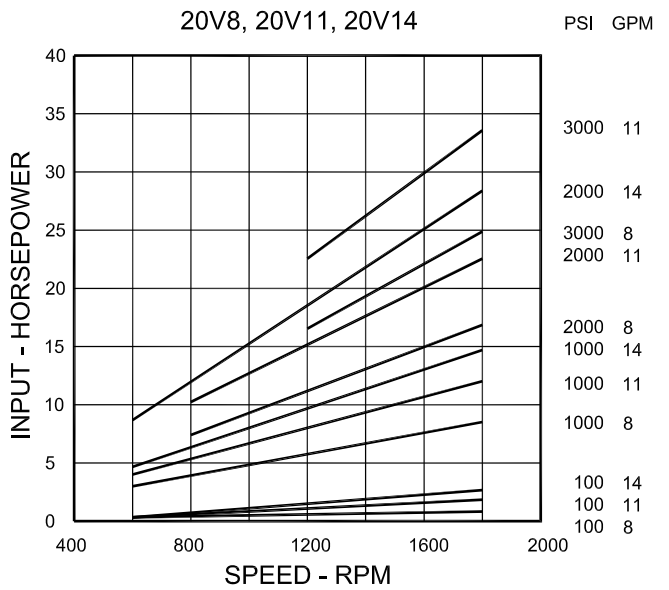
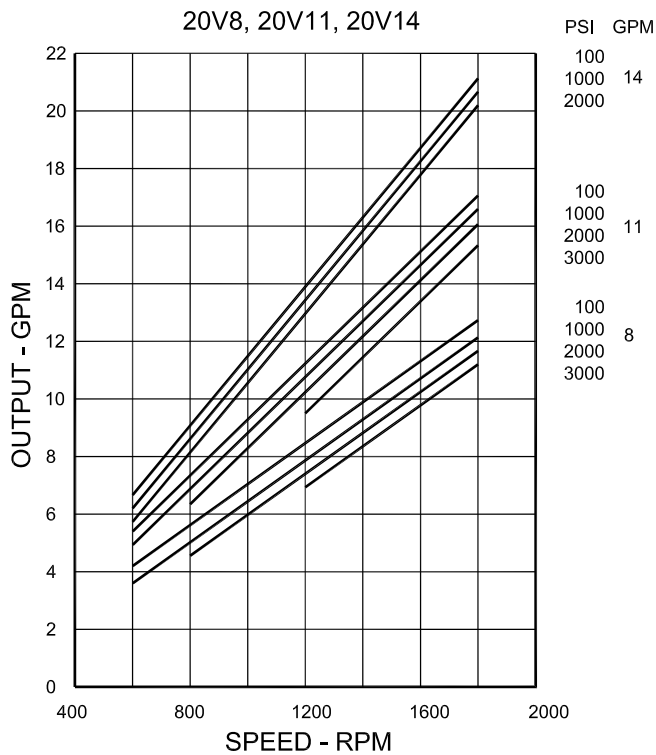
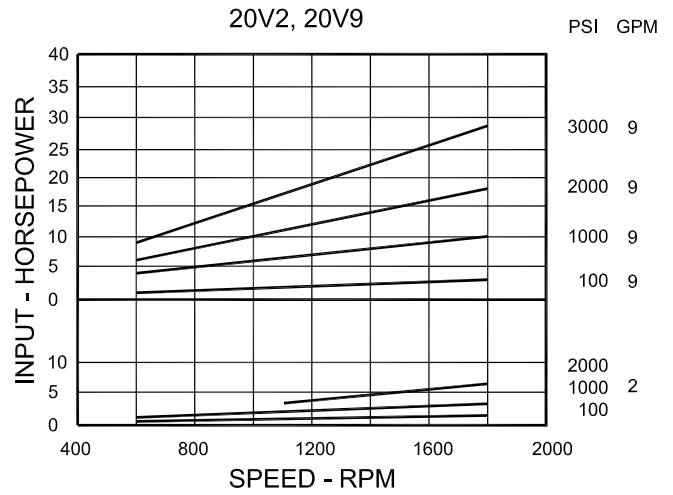
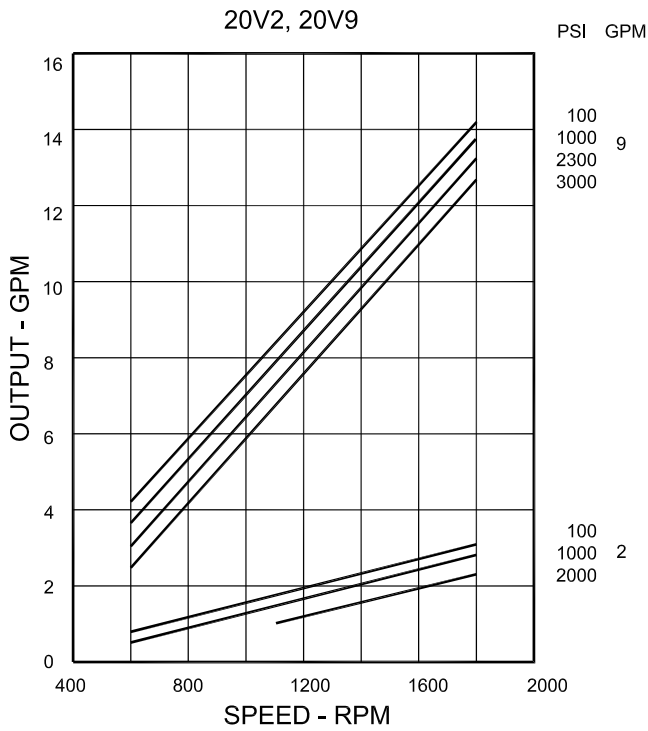
10 Rotation

(View From Shaft End of Pump)  
Omit - Right Hand Rotation (Standard)  
L - Left Hand Rotation

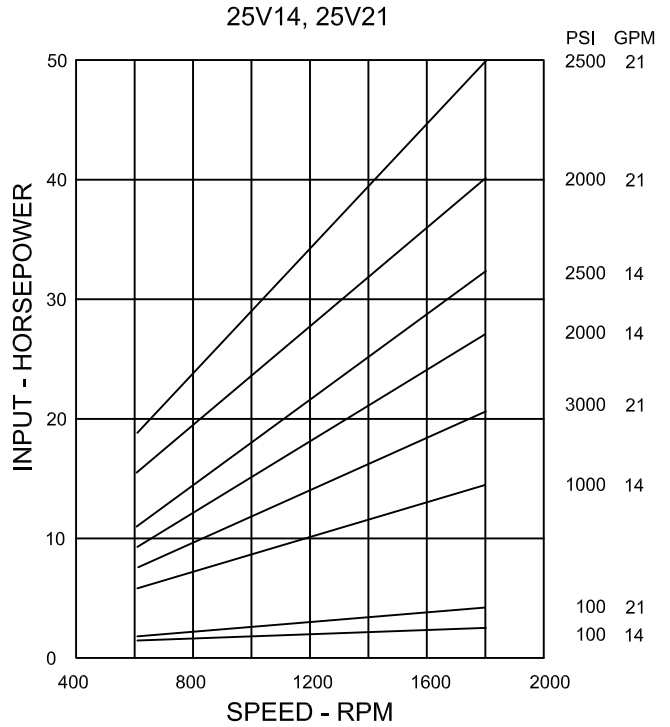
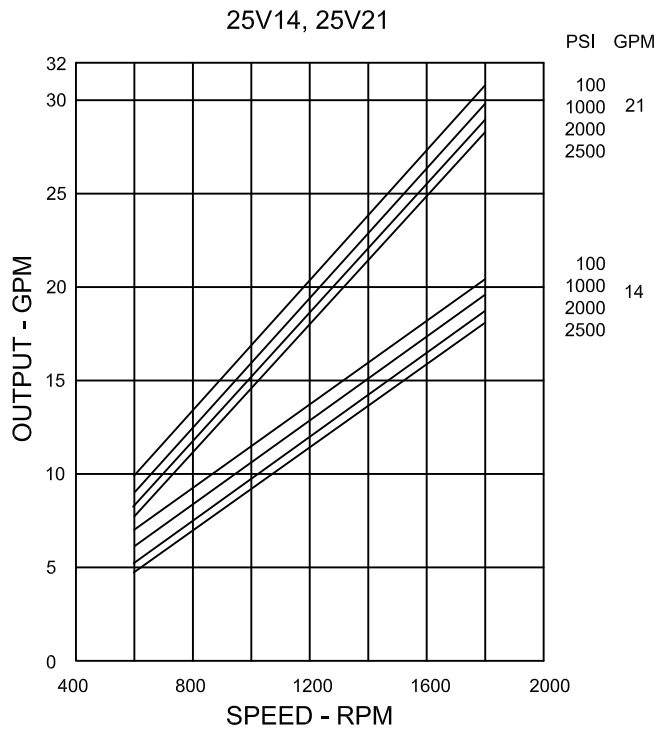
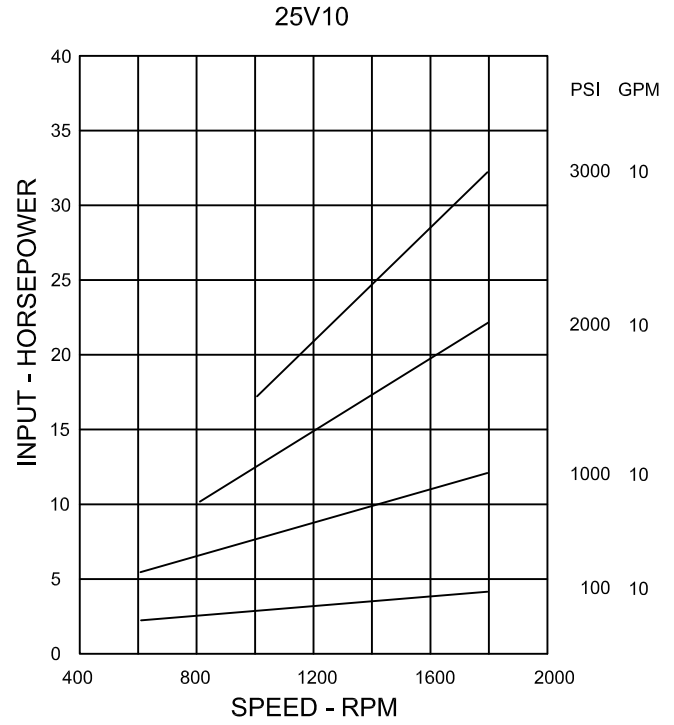
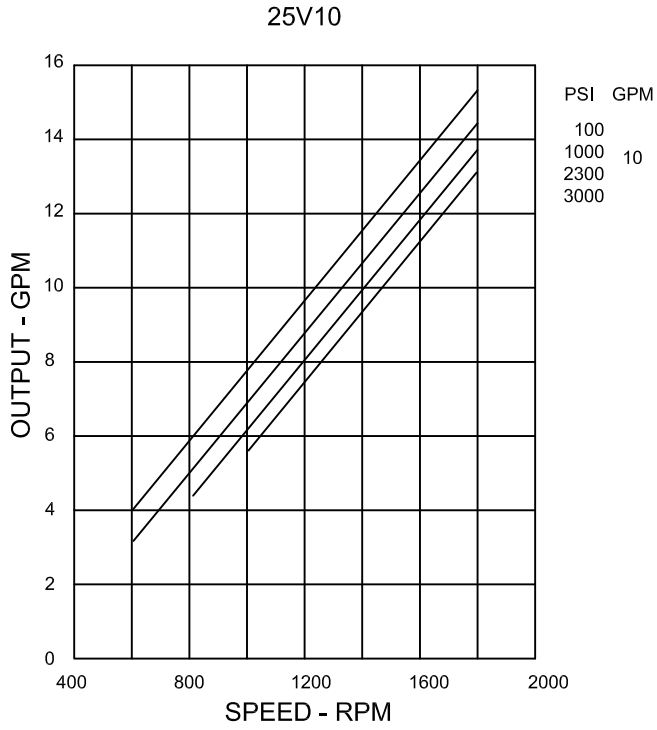
NOTE: See Respective Pump Performance in V Pump Performance for Double Pump Performance.



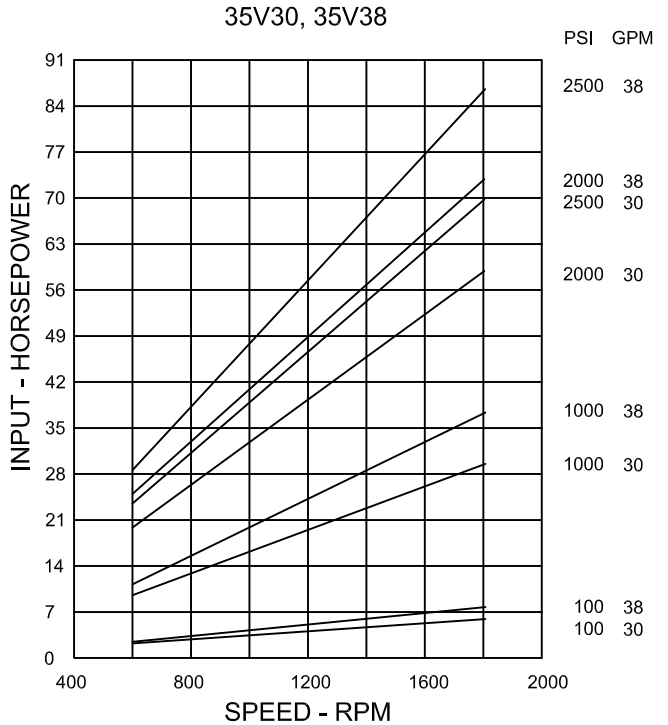
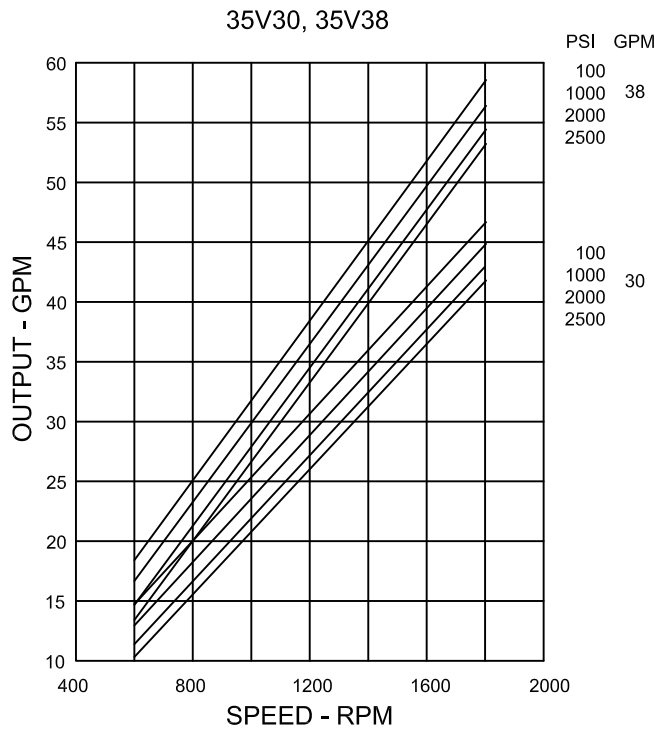
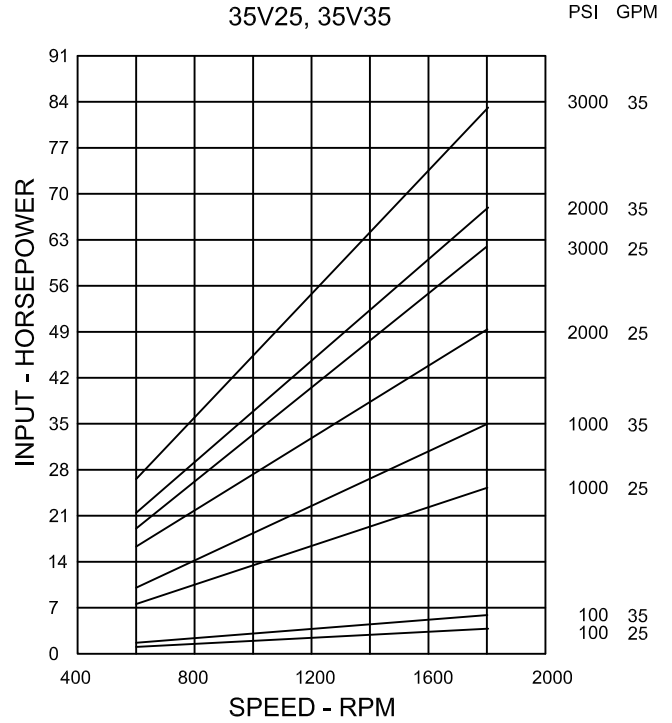
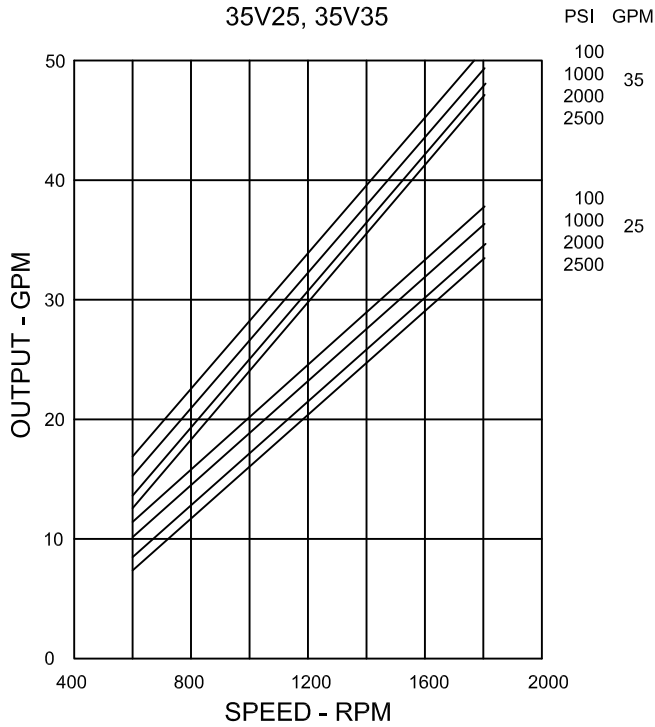
SERIES NO	PUMP (GPM)	MAX SPEED (RPM)			MAX PRESSURE (PSI)			MIN SPEED (RPM)				
		ANTI-WEAR OIL	WATER GLYCOL	WATER-IN-OIL EMULSION	ANTI-WEAR OIL	WATER GLYCOL	WATER-IN-OIL EMULSION	ALL FLUIDS				
**20V	2	1800	1500	1200	2000	2000	1000	600				
	5,8,9,11				3000	2300	1000					
	12				2300	2000	1000					
	14				2000	2000	1000					
25**V	10,12,14,17,19,21				1800	1500	1200		2500	2300	1000	600
**25V									2500	2300	1000	
35**V	25,30,32,35,38				1800	1500	1200		2500	2300	1000	600
**35V									2500	2300	1000	
45**V	42,45,50,60				1800	1500	1200		2500	2300	1000	600
	75								2000	2000	1000	



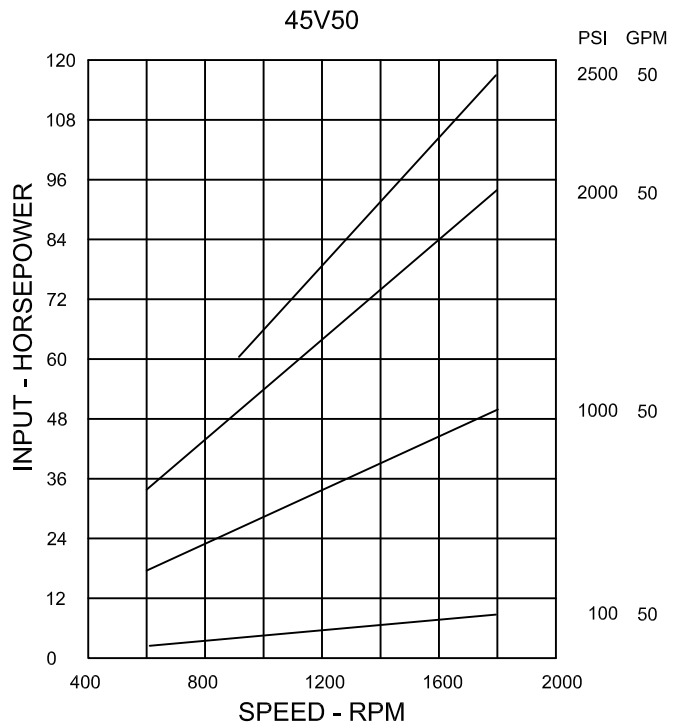
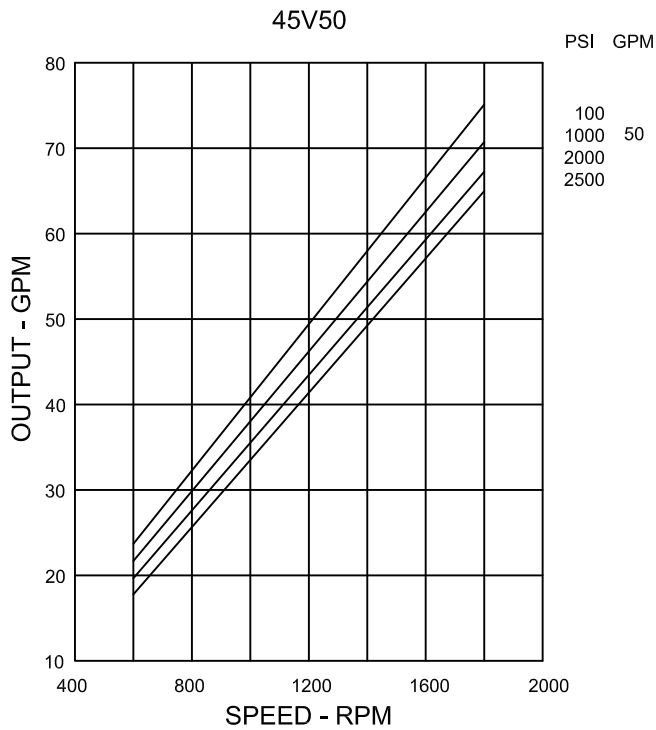
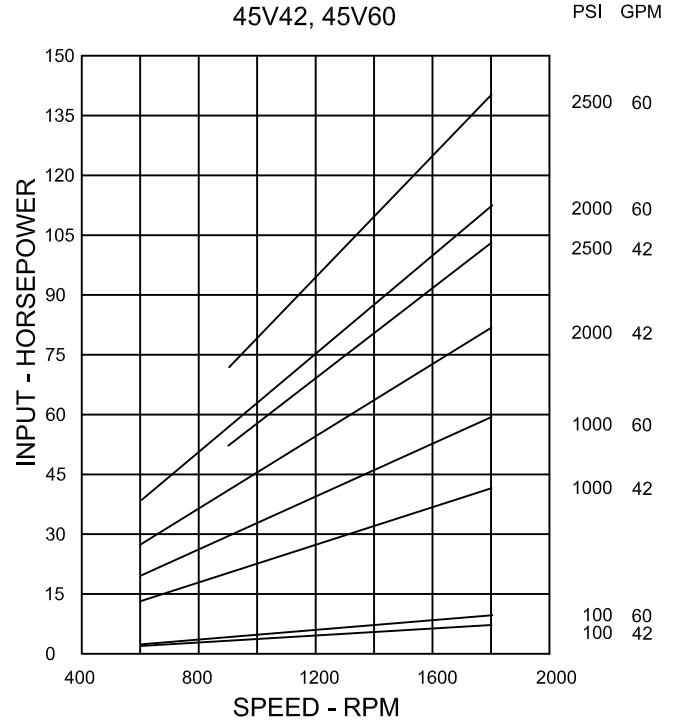
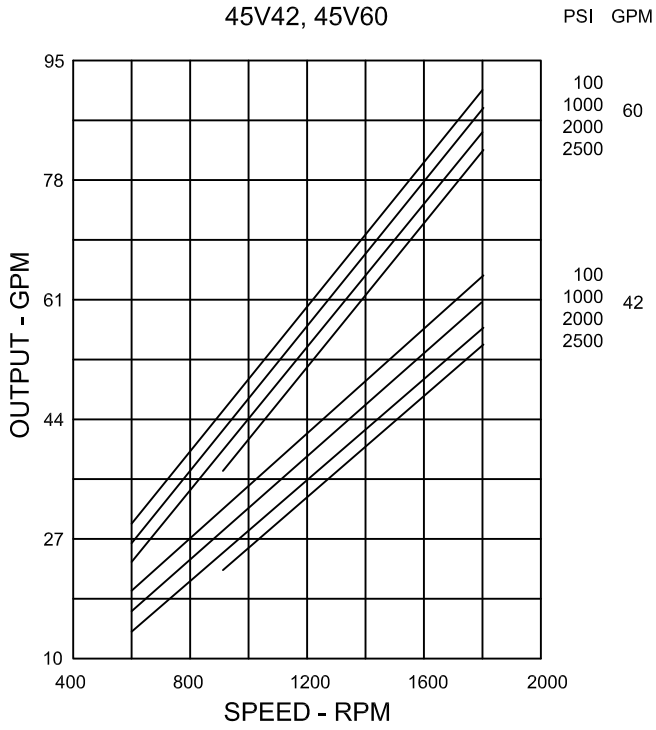
Data Based on SAE 10W Fluid @ 120°F and Pump Inlet @ 0 PSIG (14.7 PSIA)



Data Based on SAE 10W Fluid @ 120°F and Pump Inlet @ 0 PSIG (14.7 PSIA)



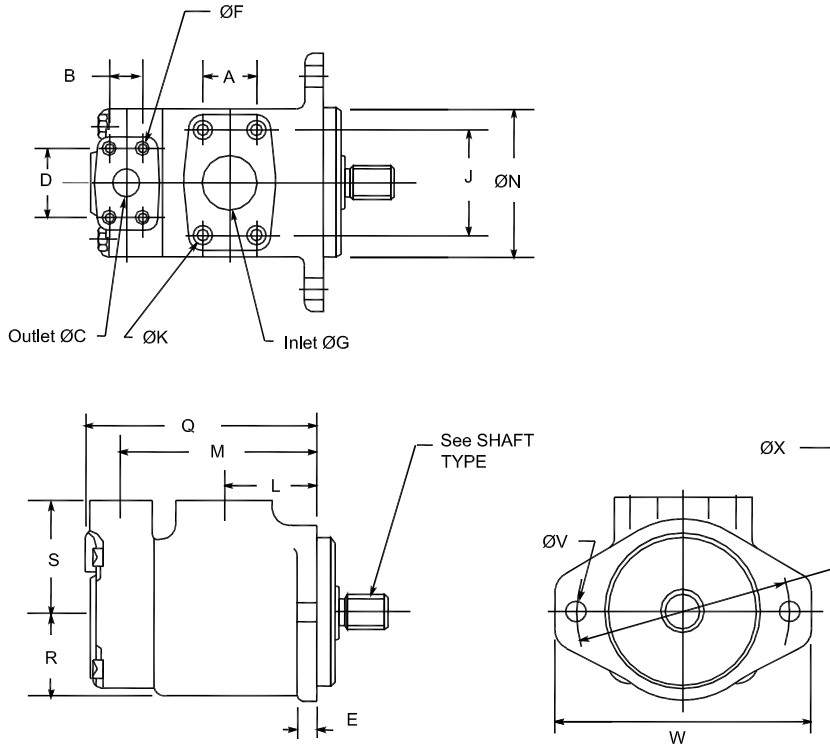
Data Based on SAE 10W Fluid @ 120°F and Pump Inlet @ 0 PSIG (14.7 PSIA)



Data Based on SAE 10W Fluid @ 120°F and Pump Inlet @ 0 PSIG (14.7 PSIA)

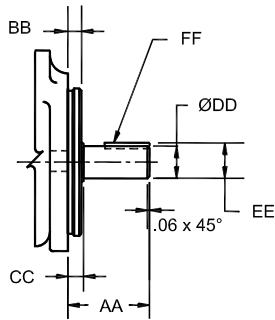


20V INSTALLATION DIMENSION

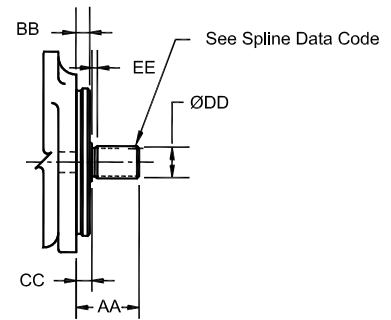


SHAFT TYPE

#1 Straight Shaft

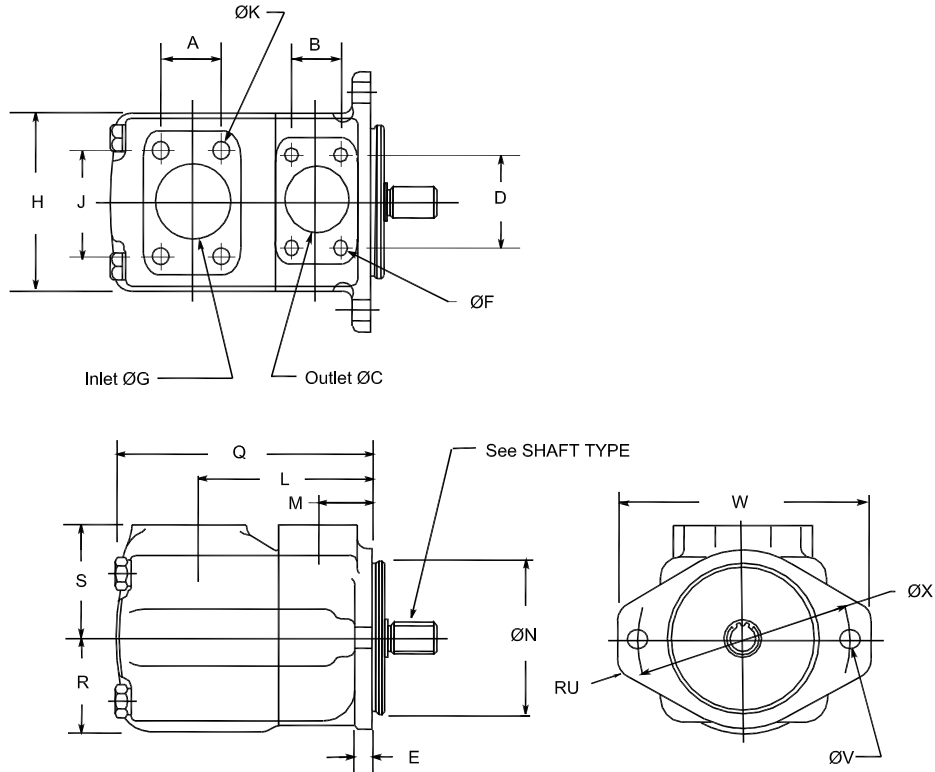


#151 Splined Shaft



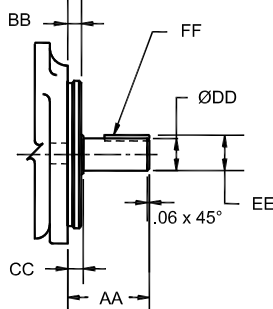
	A	B	ØC	D	E	ØG	J	L	M	ØN
BODY	1.41	0.875	0.75	1.87	0.50	1.50	2.75	2.5	5.22	4.000/3.998
	Q	R	S	ØV x 2	W	ØX				
	6.12	2.2	3.00	0.56	6.875	5.75				
PORT CONN.	ØF x 4 Holes			ØK x 4 Holes			Outlet Flange		Inlet Flange	
	3/8"-16UNC-2B x 0.75			1/2"-13UNC-2B x 0.83			F1-6-		F1-12-	
SHAFT TYPE	Shaft Type	AA	BB	CC	ØDD	EE	FF Key Width x Length			
	1	2.32	.375	.476	.875/.874	.966/.961	.187x1.25			
	Shaft Type	AA	BB	CC	ØDD	EE	Spline Data Code			
	151	1.62	.375	.437	1.09	.156	A (See Below Chart)			
	Spline Data Code	Number of Teeth	Pitch	Major Diameter	Form Diameter	Minor Diameter	Minor Diameter			
	A	13	16/32	.873/.872	.749	.734/.723	Major dia. fit			

25V INSTALLATION DIMENSION

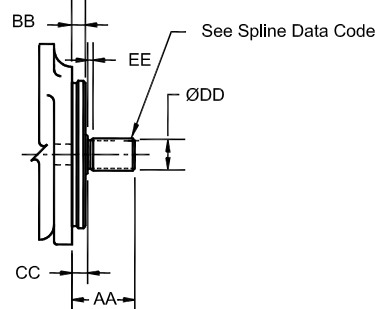


SHAFT TYPE

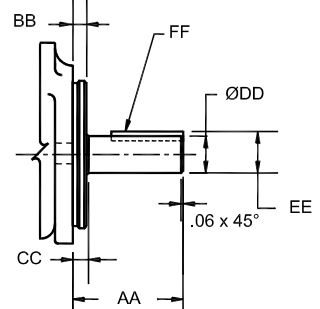
#1 Straight Shaft



#11 Splined Shaft

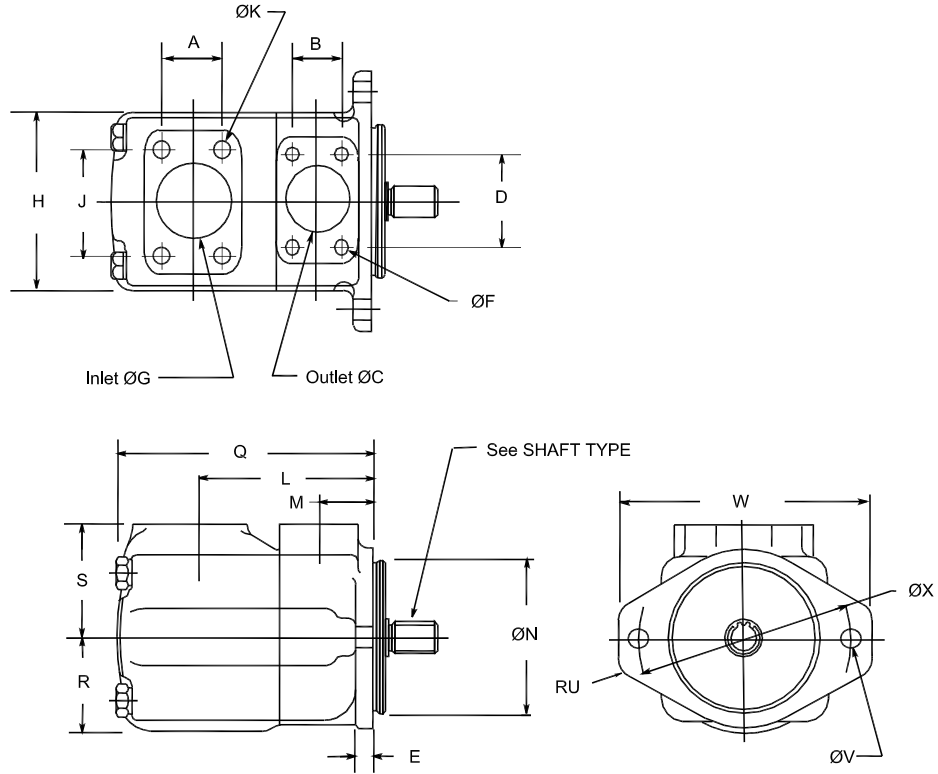


#86 Straight Shaft



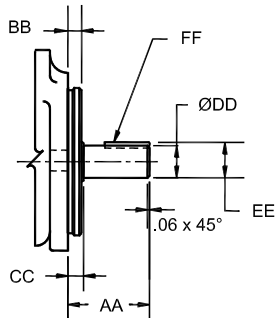
		A	B	ØC	D	E	ØG	H	J	L	M	ØN
BODY		1.41	1.03	1.00	2.06	0.50	1.50	4.62	2.75	4.76	1.50	4.000/3.998
		Q	R	S	RU	ØV x 2	W	ØX				
		6.38	2.50	3.00	0.55	0.56	6.88	5.75				
PORT CONN.		ØF x 4 Holes			ØK x 4 Holes			Outlet Flange		Inlet Flange		
		3/8"-16UNC-2B x 0.75			1/2"-13UNC-2B x 0.94			F1-8-		F1-12-		
SHAFT TYPE		Shaft Type	AA	BB	CC	ØDD	EE	FF Key Width x Length				
		1	2.32	.375	.437	.875/.874	.966/.961	.187x1.25				
		86	3.06	.375	.437	.999/.998	1.11/1.10	.250x2.00				
		Shaft Type	AA	BB	CC	ØDD	EE	Spline Data Code				
	11	1.75	.375	.437	1.09	.156	A (See Below Chart)					
	Spline Data Code	Number of Teeth	Pitch	Major Diameter	Form Diameter	Minor Diameter	Minor Diameter					
	A	13	16/32	.873/.872	.749	.734/.723	Major dia. fit					

35V INSTALLATION DIMENSION

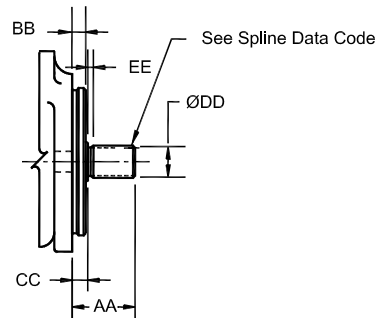


SHAFT TYPE

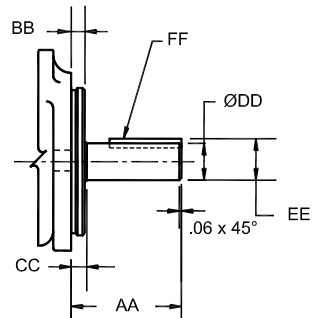
#1 Straight Shaft



#11 Splined Shaft

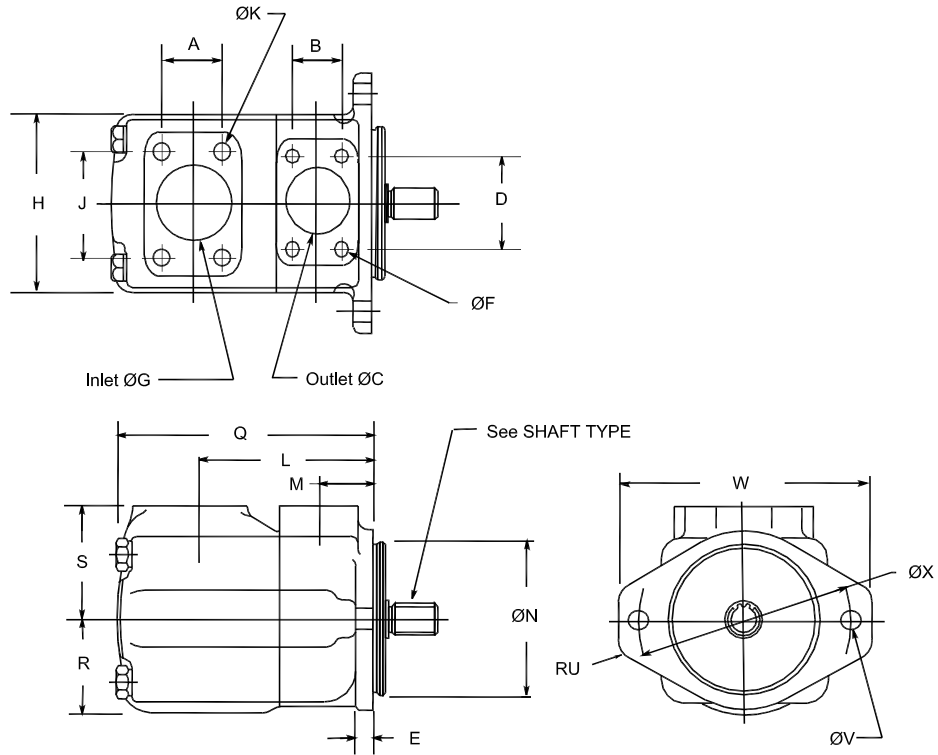


#86 Straight Shaft

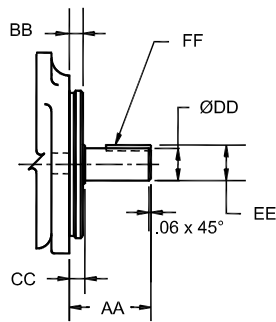


	A	B	ØC	D	E	ØG	H	J	L	M	ØN	
BODY	1.69	1.19	1.25	2.31	0.63	2.00	5.50	3.06	4.94	1.50	5.000/4.998	
	Q	R	S	RU	ØV x 2	W	ØX					
	7.28	2.75	3.25	0.63	0.69	8.38	7.13					
PORT CONN.	ØF x 4 Holes		ØK x 4 Holes		Outlet Flange		Inlet Flange					
	7/16"-14UNC-2B x 0.88		1/2 "-13UNC-2B x 0.88		F1-10-		F1-16-					
SHAFT TYPE	Shaft Type	AA	BB	CC	ØDD	EE	FF Key Width x Length					
	1	2.88	.375	.437	1.250/1.248	1.392/1.382	.313x1.50					
	86	3.88	.375	.437	1.374/1.373	1.518/1.508	.312x2.13					
	Shaft Type	AA	BB	CC	ØDD	EE	Spline Data Code					
11	2.31	.375	.437	1.38	.25	D (See Below Chart)						
Spline Data Code	Number of Teeth	Pitch	Major Diameter	Form Diameter	Minor Diameter	Minor Diameter						
D	14	12/24	1.248/1.247	1.07	1.063/1.050	Major dia. fit						

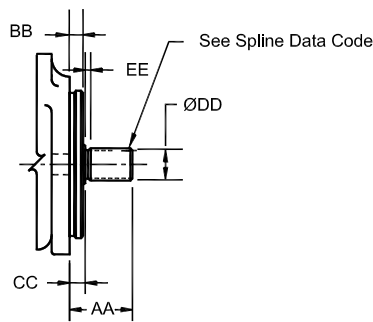
45V INSTALLATION DIMENSION



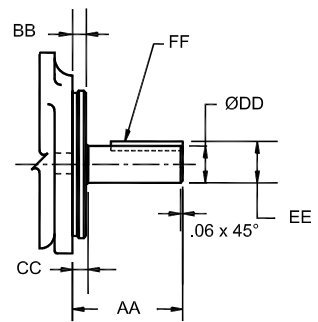
#1 Straight Shaft



#11 Splined Shaft

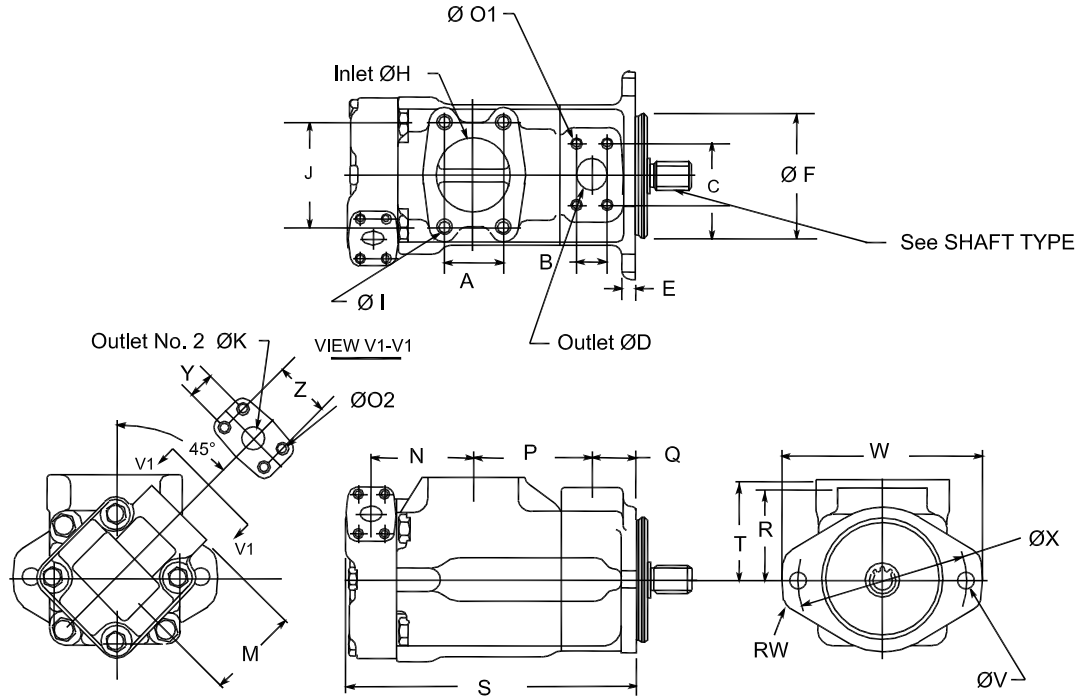


#86 Straight Shaft



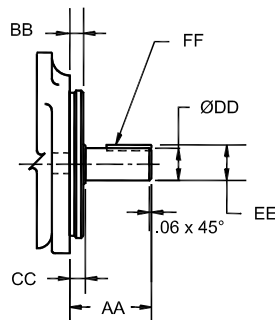
	A	B	ØC	D	E	ØG	H	J	L	M	ØN	
BODY	2.43	1.41	1.50	2.75	0.63	3.00	6.25	4.19	6.03	1.69	5.000/4.998	
	Q	R	S	RU	ØV x 2	W	ØX					
	8.50	3.25	3.69	0.63	0.69	8.38	7.13					
PORT CONN.	ØF x 4 Holes			ØK x 4 Holes			Outlet Flange		Inlet Flange			
	1/2"-13UNC-2B x 0.94			5/8 "-11UNC-2B x 1.18			F1-12-		F1-24-			
SHAFT TYPE	Shaft Type	AA	BB	CC	ØDD	EE	FF Key Width x Length					
	1	2.44	.500	.560	1.250/1.248	1.390/1.380	.312x1.12					
	86	3.44	.500	.560	1.499/1.498	1.669/1.659	.375x2.00					
	Shaft Type	AA	BB	CC	ØDD	EE	Spline Data Code					
	11	2.44	.500	.565	1.56	.38	D (See Below Chart)					
Spline Data Code	Number of Teeth	Pitch	Major Diameter	Form Diameter	Minor Diameter	Minor Diameter						
D	14	12/24	1.248/1.247	1.07	1.063/1.050	Major dia. fit						

2520V INSTALLATION DIMENSION

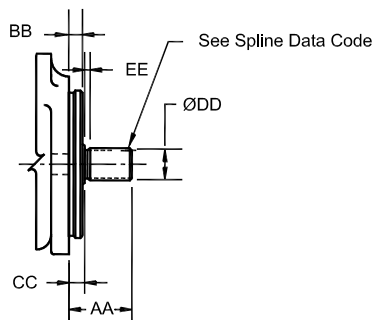


SHAFT TYPE

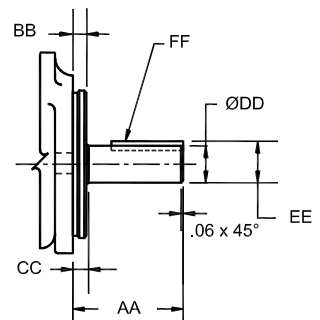
#1 Straight Shaft



#11 Splined Shaft

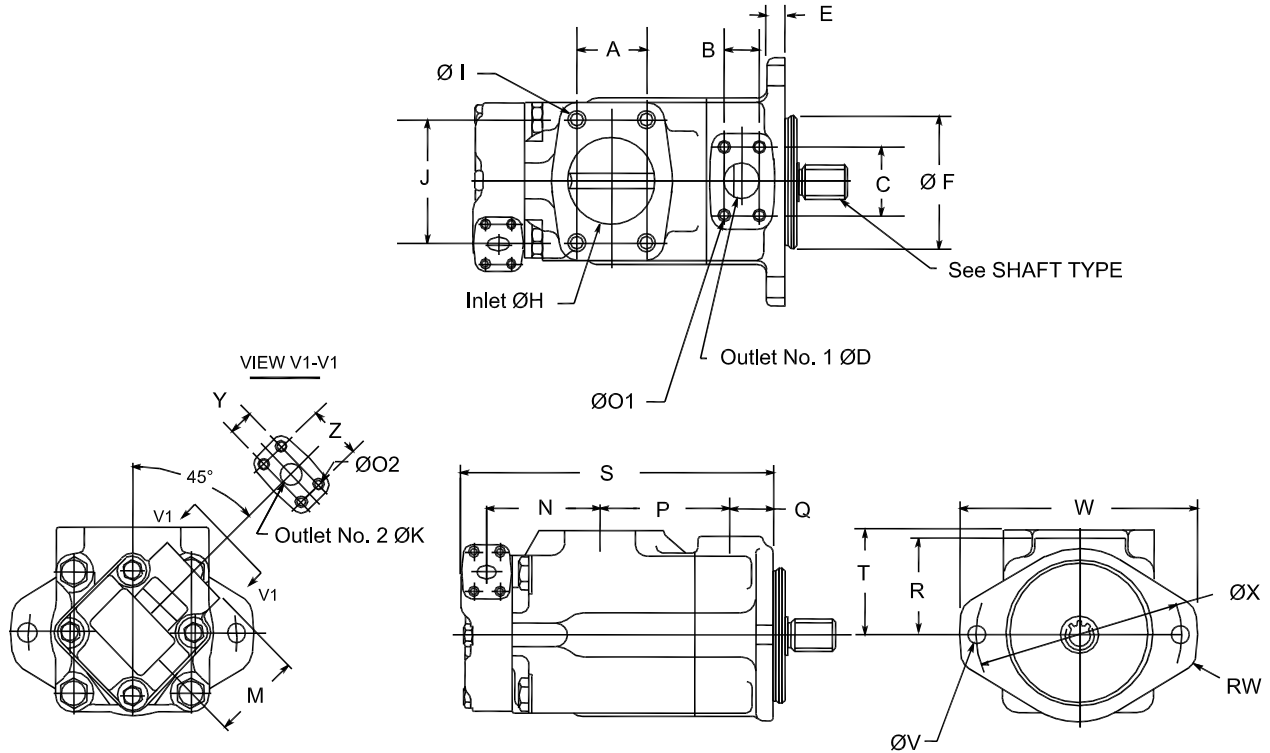


#86 Straight Shaft



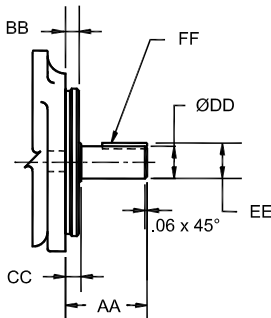
BODY	A	B	C	øD	E	øF	øH	J	øK	M	N	P	Q	R
		2.00	1.03	2.06	1.00	0.50	4.000/3.998	2.50	3.50	0.75	3.00	3.47	4.00	1.50
PORT CONN.	S	T	øV x 2	RW	W	øX	Y	Z						
	9.94	3.31	0.56	0.55	6.88	5.75	0.88	1.88						
SHAFT TYPE	øO1 x 4 Holes		øO2 x 4 Holes		øI x 4 Holes		Outlet No 1 Flange		Outlet No 2 Flange		Inlet Flange			
	3/8"-16UNC-2B x 0.75		3/8"-16UNC-2B x 0.75		1/2"-13UNC-2B x 0.94		F1-8-		F1-6-		F1-20-			
	Shaft Type	AA	BB	CC	øDD	EE	FF Key Width x Length							
	1	2.32	.375	.437	.875/.874	.966/.961	.187x1.25							
86	3.06	.375	.437	.999/.998	1.11/1.10	.250x2.00								
Shaft Type	AA	BB	CC	øDD	EE	Spline Data Code								
11	1.75	.375	.437	1.09	.156	A (See Below Chart)								
Spline Data Code	Number of Teeth	Pitch	Major Diameter	Form Diameter	Minor Diameter	Minor Diameter								
A	13	16/32	.873/.872	.749	.734/.723	Major dia. fit								

3520V INSTALLATION DIMENSION

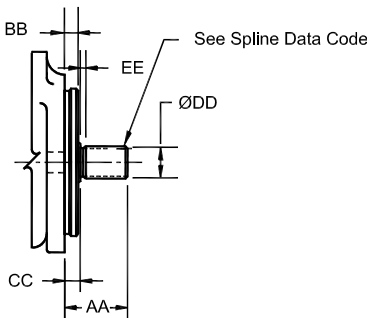


SHAFT TYPE

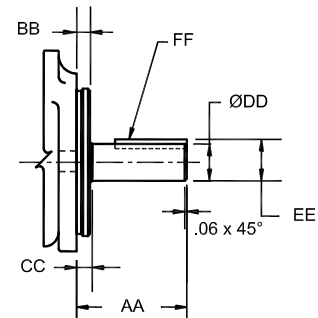
#1 Straight Shaft



#11 Splined Shaft

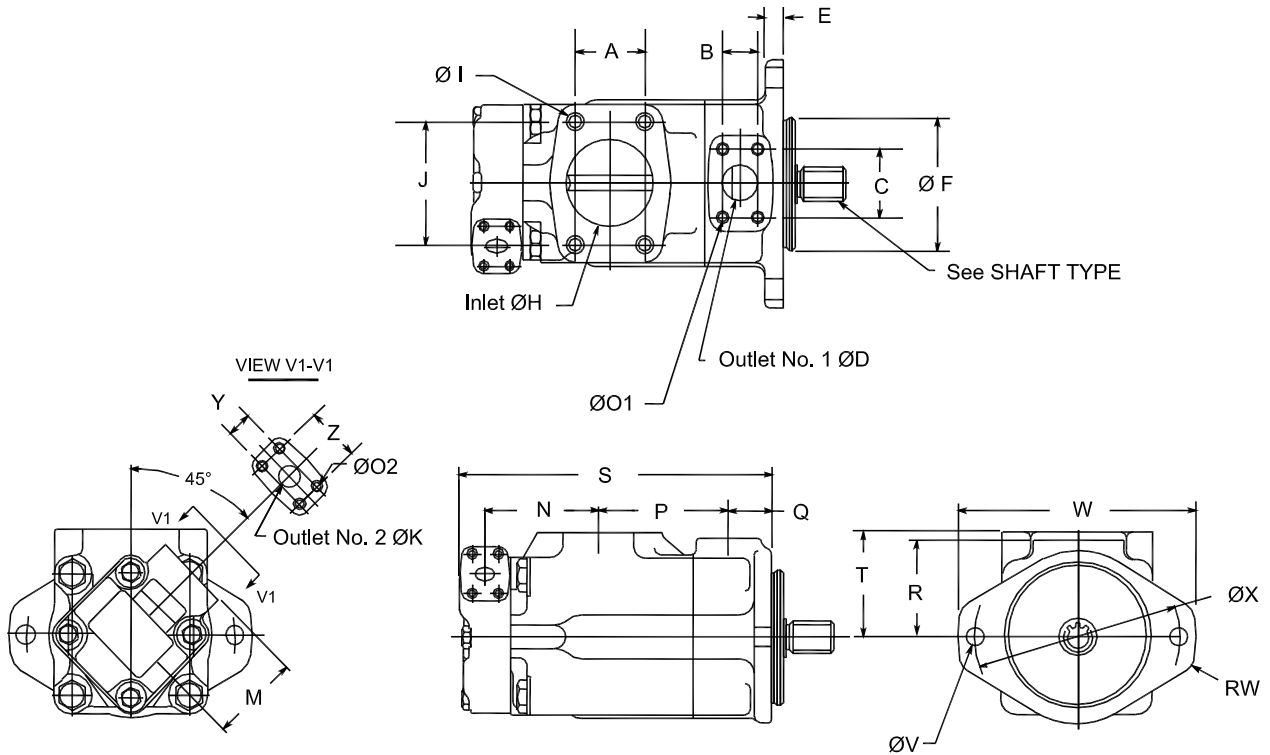


#86 Straight Shaft



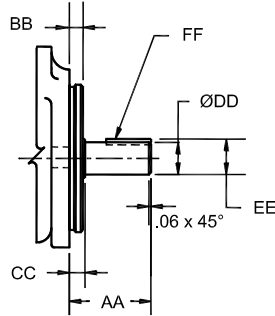
	A	B	C	øD	E	øF	øH	J	øK	M	N	P	Q	R	
BODY	2.44	1.19	2.31	1.25	0.62	5.000/4.998	3.00	4.19	0.75	3.00	3.92	4.50	1.50	3.25	
	S	T	øV x 2	RW	W	øX	Y	Z							
	10.9	3.50	0.69	0.63	8.38	7.13	0.88	1.88							
PORT CONN.	øO1 x 4 Holes			øO2 x 4 Holes			øI x 4 Holes			Outlet No 1 Flange		Outlet No 2 Flange		Inlet Flange	
	7/16"-14UNC-2B x 0.88			3/8"-16UNC-2B x 0.75			5/8"-11UNC-2B x 1.125			F1-10-		F1-6-		F1-24-	
SHAFT TYPE	Shaft Type	AA	BB	CC	øDD	EE	FF Key Width x Length								
	1	2.88	.375	.437	1.250/1.248	1.392/1.382	.313x1.50								
	86	3.88	.375	.437	1.374/1.373	1.518/1.508	.312x2.13								
	Shaft Type	AA	BB	CC	øDD	EE	Spline Data Code								
11	2.31	.375	.437	1.38	.25	D (See Below Chart)									
Spline Data Code	Number of Teeth	Pitch	Major Diameter	Form Diameter	Minor Diameter	Minor Diameter									
D	14	12/24	1.248/1.247	1.07	1.063/1.050	Major dia. fit									

3525V INSTALLATION DIMENSION

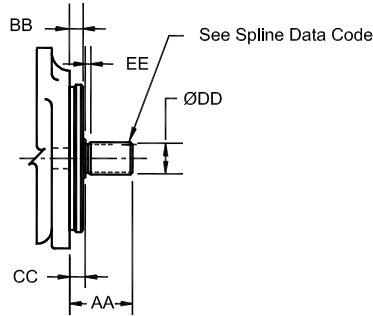


SHAFT TYPE

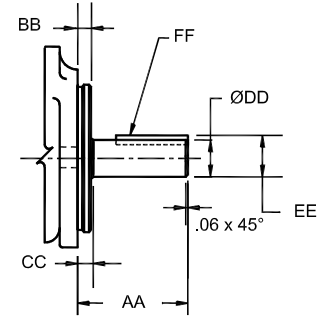
#1 Straight Shaft



#11 Splined Shaft

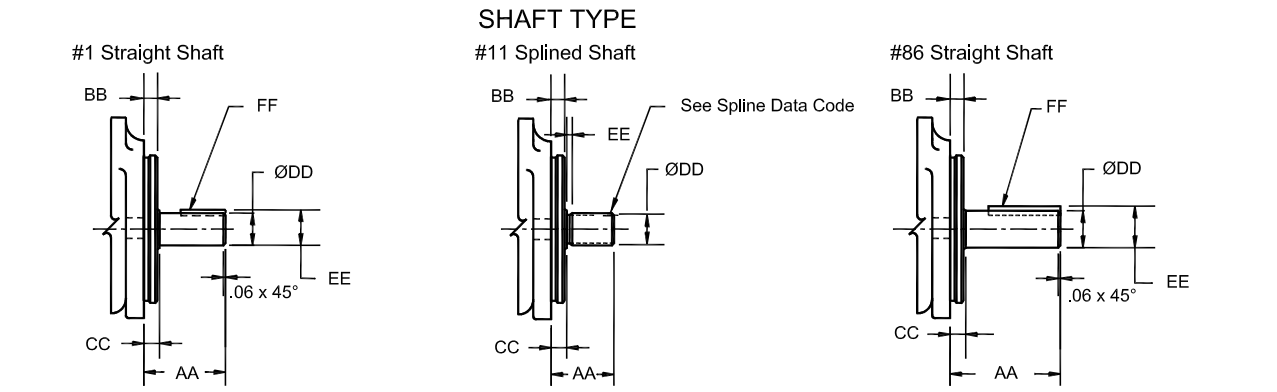
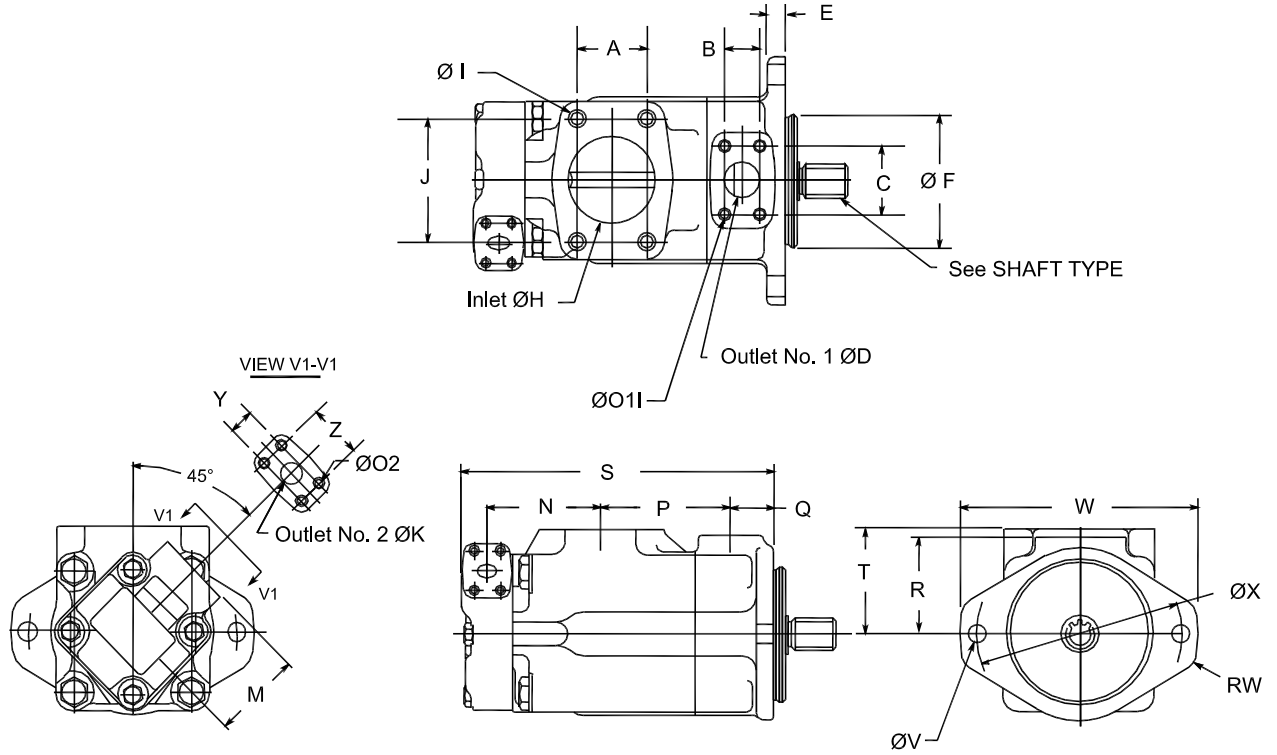


#86 Straight Shaft



BODY	A	B	C	øD	E	øF	øH	J	øK	M	N	P	Q	R
		2.44	1.19	2.31	1.25	0.62	5.000/4.998	3.00	4.19	1.00	2.94	4.31	4.50	1.50
PORT CONN.	S	T	øV x 2	RW	W	øX	Y	Z						
	11.57	3.50	0.69	0.63	8.38	7.13	1.03	2.06						
SHAFT TYPE	øO1 x 4 Holes		øO2 x 4 Holes		øI x 4 Holes			Outlet No 1 Flange		Outlet No 2 Flange		Inlet Flange		
	7/16"-14UNC-2B x 0.88		3/8"-16UNC-2B x 0.66		5/8"-11UNC-2B x 1.125			F1-10-		F1-8-		F1-24-		
	Shaft Type	AA	BB	CC	øDD	EE	FF Key Width x Length							
	1	2.88	.375	.437	1.250/1.248	1.392/1.382	.313x1.50							
86	3.88	.375	.437	1.374/1.373	1.518/1.508	.312x2.13								
Shaft Type	AA	BB	CC	øDD	EE	Spline Data Code								
11	2.31	.375	.437	1.38	.25	D (See Below Chart)								
Spline Data Code	Number of Teeth	Pitch	Major Diameter	Form Diameter	Minor Diameter	Minor Diameter								
D	14	12/24	1.248/1.247	1.07	1.063/1.050	Major dia. fit								

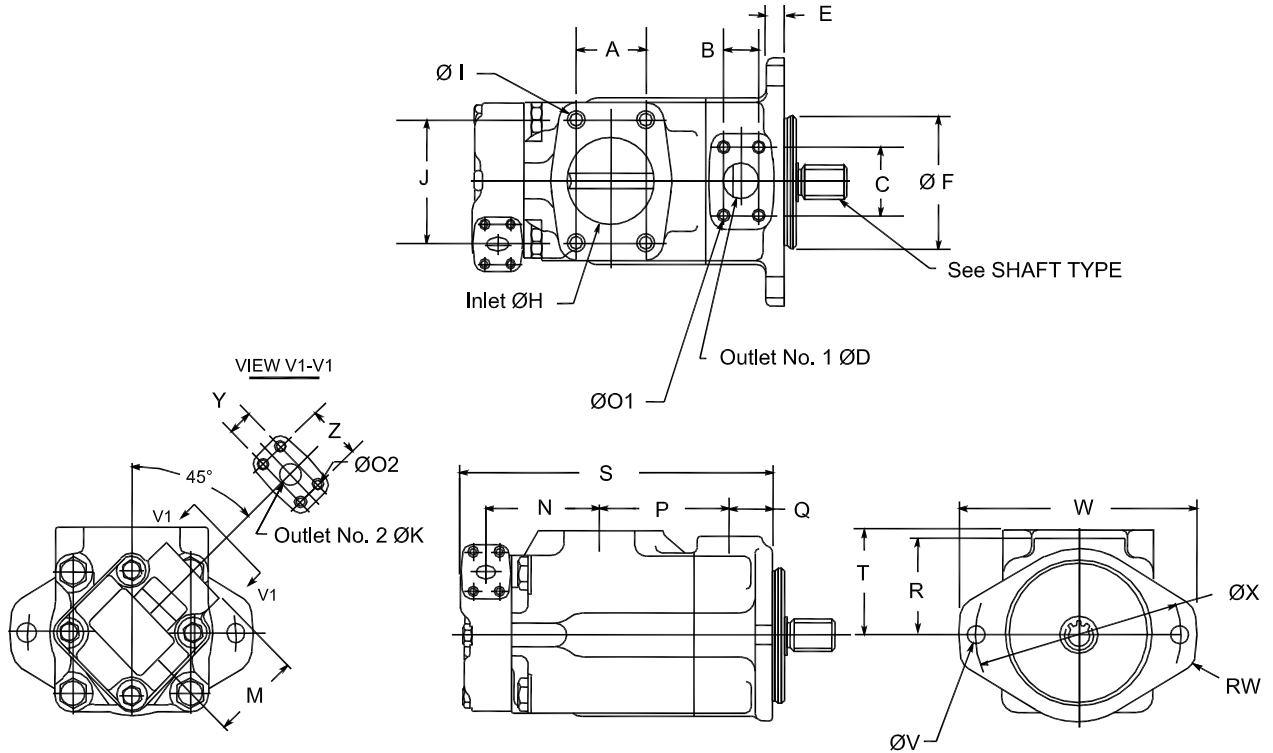
4520V INSTALLATION DIMENSION



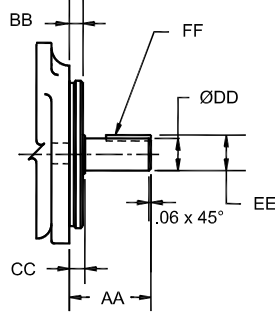
BODY	A	B	C	øD	E	øF	øH	J	øK	M	N	P	Q	R
		2.75	1.41	2.75	1.50	0.62	5.000/4.998	3.50	4.75	0.75	3.00	4.72	4.70	1.69
PORT CONN.	S	T	øV x 2	RW	W	øX	Y	Z						
	12.08	4.03	0.69	0.63	8.38	7.13	0.88	1.88						
SHAFT TYPE	øO1 x 4 Holes		øO2 x 4 Holes		øI x 4 Holes		Outlet No 1 Flange		Outlet No 2 Flange		Inlet Flange			
	12"-13UNC-2B x 0.94		3/8"-16UNC-2B x 0.75		5/8"-11UNC-2B x 1.25		F1-12-		F1-6-		F1-28-			
SHAFT TYPE	Shaft Type	AA	BB	CC	øDD	EE	FF Key Width x Length							
	1	2.44	.500	.560	1.250/1.248	1.390/1.380	.312x1.12							
	86	3.44	.500	.560	1.499/1.498	1.669/1.659	.375x2.00							
	Shaft Type	AA	BB	CC	øDD	EE	Spline Data Code							
11	2.44	.500	.565	1.56	.38	D (See Below Chart)								
Spline Data Code	Number of Teeth	Pitch	Major Diameter	Form Diameter	Minor Diameter	Minor Diameter								
D	14	12/24	1.248/1.247	1.07	1.063/1.050	Major dia. fit								



4525V INSTALLATION DIMENSION

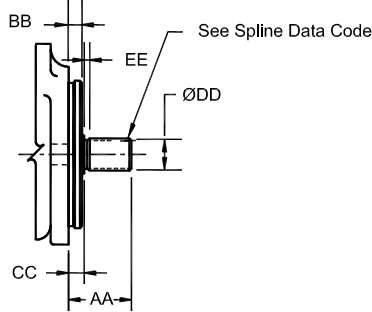


#1 Straight Shaft

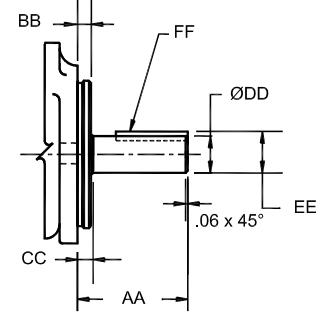


SHAFT TYPE

#11 Splined Shaft

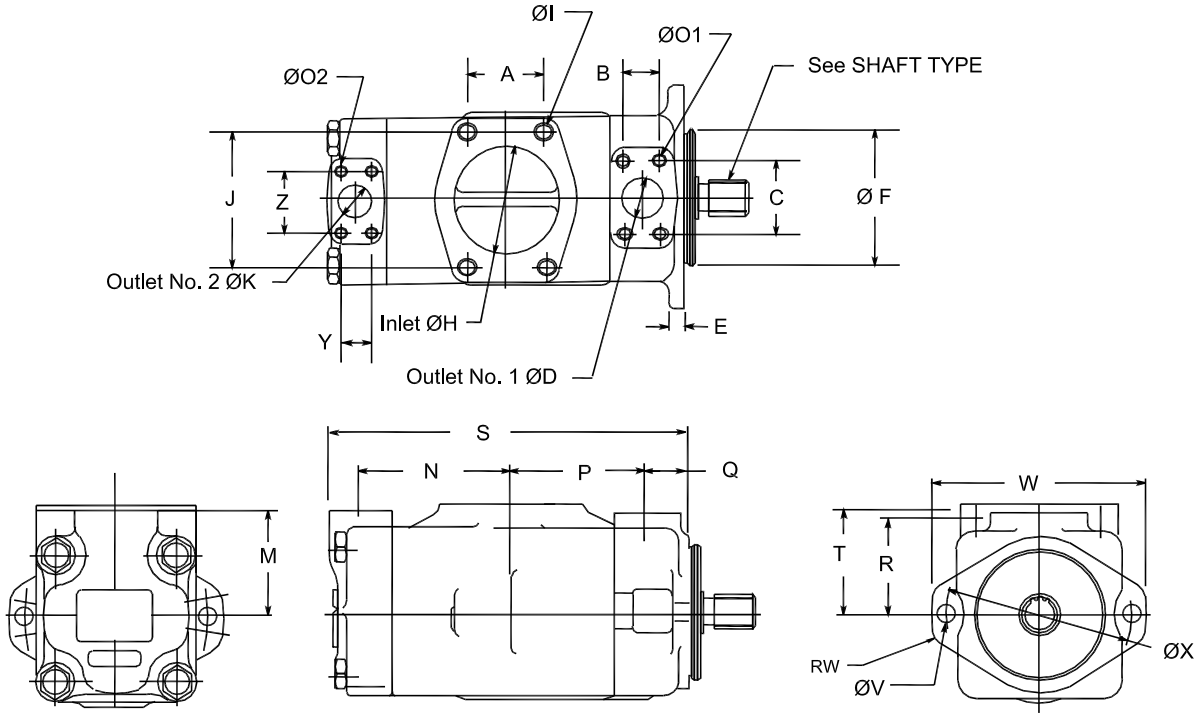


#86 Straight Shaft



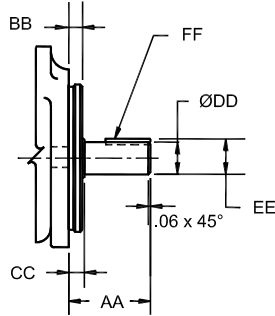
BODY	A	B	C	ØD	E	ØF	ØH	J	ØK	M	N	P	Q	R
		2.75	1.41	2.75	1.50	0.62	5.000/4.998	3.50	4.75	1.00	2.94	5.35	4.70	1.69
PORT CONN.	S	T	ØV x 2	RW	W	ØX	Y	Z						
	13.0	4.03	0.69	0.63	8.38	7.13	1.03	2.06						
SHAFT TYPE	ØO1 x 4 Holes		ØO2 x 4 Holes		Ø I x 4 Holes			Outlet No 1 Flange		Outlet No 2 Flange		Inlet Flange		
	12"-13UNC-2B x 0.94		3/8"-16UNC-2B x 0.66		5/8"-11UNC-2B x 1.25			F1-12-		F1-8-		F1-28-		
	Shaft Type	AA	BB	CC	ØDD	EE	FF Key Width x Length							
	1	2.44	.500	.560	1.250/1.248	1.390/1.380	.312x1.12							
86	3.44	.500	.560	1.499/1.498	1.669/1.659	.375x2.00								
Shaft Type	AA	BB	CC	ØDD	EE	Spline Data Code								
11	2.44	.500	.565	1.56	.38	D (See Below Chart)								
Spline Data Code	Number of Teeth	Pitch	Major Diameter	Form Diameter	Minor Diameter	Minor Diameter								
D	14	12/24	1.248/1.247	1.07	1.063/1.050	Major dia. fit								

4535V INSTALLATION DIMENSION

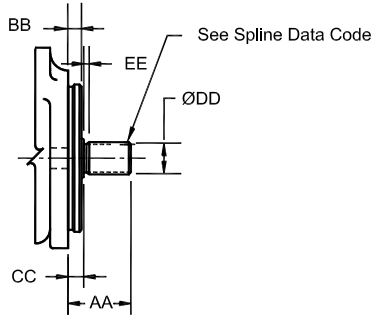


SHAFT TYPE

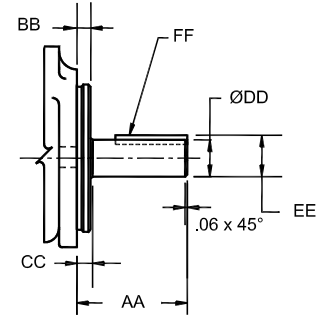
#1 Straight Shaft



#11 Splined Shaft

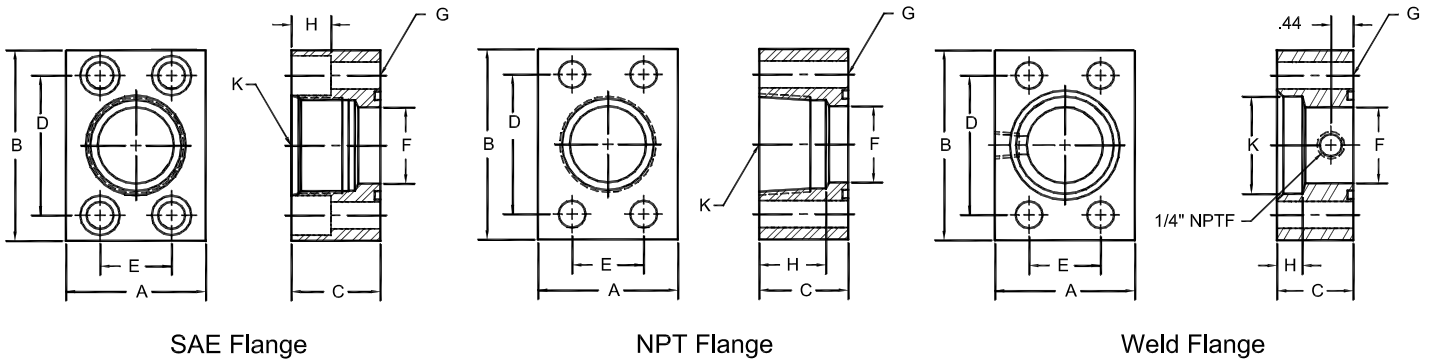


#86 Straight Shaft



	A	B	C	øD	E	øF	øH	J	øK	M	N	P	Q	R	
BODY	3.06	1.41	2.75	1.50	0.62	5.000/4.998	4.00	5.13	1.25	4.00	5.84	5.25	1.69	3.69	
	S	T	øV x 2	RW	W	øX	Y	Z							
	13.9	4.03	0.69	0.63	8.38	7.13	1.19	2.31							
PORT CONN.	øO1 x 4 Holes			øO2 x 4 Holes			øI x 4 Holes			Outlet No 1 Flange		Outlet No 2 Flange		Inlet Flange	
	1/2"-13UNC-2B x 0.94			7/16"-14UNC-2B x 0.88			5/8"-11UNC-2B x 1.25			F1-12-		F1-10-		F1-32-	
SHAFT TYPE	Shaft Type	AA	BB	CC	øDD	EE	FF Key Width x Length								
	1	2.44	.500	.560	1.250/1.248	1.390/1.380	.312x1.12								
	86	3.44	.500	.560	1.499/1.498	1.669/1.659	.375x2.00								
	Shaft Type	AA	BB	CC	øDD	EE	Spline Data Code								
11	2.44	.500	.565	1.56	.38	D (See Below Chart)									
Spline Data Code	Number of Teeth	Pitch	Major Diameter	Form Diameter	Minor Diameter	Minor Diameter									
D	14	12/24	1.248/1.247	1.07	1.063/1.050	Major dia. fit									

SAE 4-Bolt Flange



SAE Straight Threaded	Flange Size	A	B	C	D	E	F	G	H	K	BOLT SIZE ①
F1-6-S	3/4	1.75	2.62	1.5	1.875	0.875	0.75	0.41	0.59	1 1/16-12	3/8-16 x 1 1/2
F1-8-S	1	2	2.82	1.5	2.062	1.031	1	0.41	0.59	1 5/16-12	3/8-16 x 1 1/2
F1-10-S	1 1/4	2.5	3.19	1.5	2.312	1.188	1.25	0.47	0.71	1 5/8-12	7/16-14 x 1 1/2
F1-12-S	1 1/2	2.75	3.75	1.75	2.75	1.406	1.5	0.53	0.78	1 7/8-12	1/2-13 x 1 3/4

NPTF Pipe Threaded	Flange Size	A	B	C	D	E	F	G	H	K (NPTF)	BOLT SIZE ①
F1-6-P	3/4	1.75	2.62	1.25	1.88	0.88	0.75	0.41	1.06	3/4	3/8-16 x 2
F1-8-P	1	2.00	2.82	1.50	2.06	1.03	1.00	0.41	1.25	1	3/8-16 x 2 1/4
F1-10-P	1 1/4	2.50	3.19	1.50	2.31	1.19	1.25	0.47	1.31	1 1/4	7/16-14 x 2 1/4
F1-12-P	1 1/2	2.75	3.75	1.75	2.75	1.41	1.50	0.53	1.31	1 1/2	1/2-13 x 2 1/2
F1-16-P	2	3.25	4.00	1.75	3.06	1.69	1.94	0.53	1.31	2	1/2-13 x 2 1/2
F1-20-P ②	2 1/2	4.00	4.50	2.00	3.50	2.00	2.44	0.53	1.75	2 1/2	1/2-13 x 2 3/4
F1-24-P ③	3	4.50	5.50	2.25	4.19	2.44	2.94	0.66	2.00	3	5/8-11 x 3 1/2

Pipe Welded	Flange Size	A	B	C	D	E	F	G	H	K	BOLT SIZE ①
F1-8-W	1	2.00	2.82	1.25	2.062	1.031	1.00	0.41	0.50	1.335	3/8-16 x 2
F1-10-W	1 1/4	2.50	3.19	1.25	2.312	1.188	1.25	0.47	0.50	1.680	7/16-14 x 2
F1-12-W	1 1/2	2.75	3.75	1.25	2.750	1.406	1.50	0.53	0.50	1.920	1/2-13 x 2
F1-16-W	2	3.25	4.00	1.50	3.062	1.688	1.94	0.53	0.62	2.411	1/2-13 x 2 1/4
F1-20-W ②	2 1/2	4.00	4.50	1.75	3.500	2.000	2.44	0.53	0.75	2.911	1/2-13 x 2 1/2
F1-24-W ③	3	4.50	5.31	2.00	4.188	2.438	2.94	0.66	0.75	3.540	5/8-11 x 3
F1-28-W ④	3 1/2	5.00	6.00	1.50	4.750	2.750	3.44	0.66	0.75	4.045	5/8-11 x 2 1/2
F1-32-W ④	4	5.50	6.38	1.50	5.125	3.062	3.94	0.66	0.75	4.550	5/8-11 x 2 1/2

- ① Order Separately
- ② 2500 PSI Max
- ③ 2000 PSI Max
- ④ 500 PSI Max